



18321

A2U
USA
549/9

KG
101

May	9	16	23	30	
June	6	13	23	27	
July	4*	11	18	25	
August	1	8	15	22	29
September	5	12			

* denotes Crew Race

2013 Can One Thursday Night Series Notice of Race & Sailing Instructions

**2013 Can One Thursday Night Series
Can One Evening Race Association
NOTICE OF RACE**

1 INTRODUCTION

The purpose of the Can One Evening Race Association (COERA) is to provide an environment for good racing and good fellowship, at the same time promoting good seamanship and sportsmanship. The Notice of Race and Sailing Instructions are published so that all members will have information at hand which will help them to become better sailors and assist them in beginning, renewing and deepening good friendships.

2 RULES

2.1 *The regatta will be governed by the rules as defined in The Racing Rules of Sailing 2013-2016 (RRS).*

2.2 *Any changes to the RRS will appear in full in the sailing instructions.*

3 ELIGIBILITY AND ENTRY

3.1 Single-hull, self-righting sailboats of 18 feet or more length overall, meeting the requirements of IRC or PHRF. The COERA is open to members of Huguenot, New York Athletic Club, Glen Island, Orienta, American and Larchmont Yacht Clubs and other interested parties. The COERA Executive Committee will be the sole judge of a yacht's eligibility, subject to RRS 76.1.

3.2 Eligible boats may enter by completing the **Online Entry Form/ Application** via the Yacht Scoring Website - 2013 Can One 2013 Thursday Night Series Page, the fee can be paid via PayPal function of the YachtScoring Website

3.3 Late entries may be accepted by contacting the Treasurer.

4 CLASSES AND FEES

4.1 There will be Spinnaker and Jib and Main non-spinnaker (JAM) Divisions. The number of Classes per Divisions and rating splits will be determined by the number of entries and historical participation.

4.2 Required fees are as follows: All Classes \$300 for Entry Fee the series.

5 SCHEDULE

5.1 Dates of racing:

May 9 16 23 30
June 6 13 20 27
July 4* 11 18 25
August . 1 8 15 22 29
September. 5 12
* denotes Crew Race

5.2 Number of races: There will be one race per evening, with a total of 19 races scheduled beginning May 9th, 2013 and continue every subsequent Thursday until September 12th.

5.3 The scheduled time of the warning signal for the first Class start is 1900.

6 MEASUREMENTS

6.1 Each boat shall produce a valid PHRF rating certificate issued by the YRALIS.

6.2 Yachts without a valid YRALIS PHRF Certificate will be assigned a PHRF handicap based on current YRALIS PHRF BASE Ratings. The COERA Scorer/Handicapper shall assign a rating valid only for COERA races.

6.3 After two years of membership in COERA, a member yacht is required to join the YRALIS and hold a valid PHRF certificate.

7 SAILING INSTRUCTIONS

The sailing instructions will be available via the Yacht Scoring Website - 2013 Can One 2013 Thursday Night Series Page

8 VENUE AND COURSES

8.1 The racing area will be in the vicinity of Can One. Note: the start location may be from a buoy other than Can One.

8.2 Courses for each Division will be around Government Buoys and will be signaled by the Race Committee boat.

8.3 Marks Chart of Sailing Instructions shows the location of the racing area and the approximate location of each Government Buoy.

9 PENALTY SYSTEM

9.1 COERA will observe US Sailing Prescription **APPENDIX T - Alternative Procedures for Dispute Resolution Section B - Post Race Penalties - T2.1**

9.2 All protests will be heard in the open to make the protest hearing a learning experience for all sailors.

9.3 If you have been in a collision, you are **REQUIRED** to come to Huguenot Yacht Club immediately after the race for a protest hearing.

10 SCORING

10.1 Scoring will be calculated by the use of the Cox-Sprague System, with the points for each race determined by the number of starters in the Class and the finishing position of each yacht.

10.2 Participation in eight of the scheduled races is needed to qualify. Yachts serving as Race Committee, starting a race that is subsequently cancelled or in the Starting Area during a postponement prior to a cancellation, shall receive credit towards qualifying should the yacht not otherwise complete the required eight races.

10.3 If a yacht sails in more races than needed to qualify, its season standing shall be determined by the average score of the yacht's best eight races.

11 RADIO COMMUNICATION

11.1 The Race Committee shall communicate over VHF 71 and participants should monitor this channel prior to departure for updates from the Race Committee and continue until finished racing.

11.2 Except in an emergency, a boat shall neither make radio transmissions while racing nor receive radio communications not available to all boats. This restriction also applies to mobile telephones.

12 PRIZES

12.1 Prizes will be awarded only to boats that have "qualified." Prizes will be awarded for final season standings of qualifying yachts in each Class, the number of places to be determined by the size of the division.

12.2 First, Second and Third place will be awarded in each Class of the Overall Series and Crew Race.

12.2 First place will be awarded to best representative yacht from the N. Y. A. C. Yacht Club, Glen Island Yacht Club, Huguenot Yacht Club, Orienta Yacht Club, Larchmont Yacht Club, American Yacht Club, and nonaffiliated participants.

12.3 Perpetual Trophies will be awarded as follows:

The George Hoffman Trophy - Best Scoring yacht in the entire fleet (Spinnaker & Non-Spinnaker)

The F. Neale Magrath Trophy - Best scoring yacht a not affiliated with a Can One member Yacht Club.

The Rookie Trophy - Best Scoring yacht in its first year in Can One Racing

The Dolf LeComte Trophy - Best Scoring yacht over 20 years old

The Joseph Sansone Trophy - Most Improved yacht over previous year's performance

The Commodore Fred Skinner Trophy - Best scoring Yacht Club of Can One Member Clubs

The Sturzenburger Trophy - the yacht with the biggest screw-up in the season races (Sturzenburger sailed his Islander 34 across a tug/ barge towline without damage)

The Competitors Trophy - Non-Skipper loyal member of Can One. Awarded as needed.

13 FURTHER INFORMATION

For further information please contact a COERA Flag Officer, your Club Representative, or one of the Administrative Officers.



The CAN ONE Evening Race Association is a member of the Yacht Racing Association of Long Island Sound and the U.S. Sailing Association.

FLAG OFFICERS

Commodore	Lawrence R. Rouen	Huguenot Yacht Club
Vice Commodore	John Scagnelli	Huguenot Yacht Club
Rear Commodore	Steve Cain	Huguenot Yacht Club
Spinnaker Fleet Captain	Roger Widmann	Larchmont Yacht Club
Non-Spinnaker Fleet Captain	Paul Osmolskis	N. Y. A. C. Yacht Club

CLUB REPRESENTATIVES

Huguenot Yacht Club	Mark Rosenberg
Glen Island Yacht Club	Arthur Karpf
N. Y. A. C. Yacht Club	Paul Osmolskis
Larchmont Yacht Club	Roger Widmann
American Yacht Club	Dan Goldberg
Oriente Yacht Club	John Brown

ADMINISTRATIVE OFFICERS

Secretary	Lawrence Roen	201-907-0093
Treasurer	Elith Larsen	914-667-1543
Scorer/Handicapper	Adam Loory	718-885-2028

**2013 Can One Thursday Night Series
Can One Evening Race Association
SAILING INSTRUCTIONS**

1 RULES

The regatta will be governed by the rules as defined in *The Racing Rules of Sailing 2013-1016* (RRS) including US Sailing Prescriptions, except as modified herein.

2 NOTICES TO COMPETITORS

Notices to competitors will be posted on the official Can One Evening Race Association (COERA) website
<http://canone.org/>

3 CHANGES TO SAILING INSTRUCTIONS

Any change to the sailing instructions will be posted before 1700 on the day it will take effect, except that any change to the schedule of races will be posted by 2000 on the day before it will take effect.

4 SCHEDULE OF RACES

4.1 Dates of racing:

May 9 16 23 30
June 6 13 23 27
July 4* 11 18 25
August . 1 8 15 22 29
September. 5 12
* denotes Crew Race

4.2 Number of races: There will be a maximum of one race per evening.

4.3 The scheduled time of the first Warning Signal for the first Class start is 1900.

5 RACING AREA

Marks Chart of Sailing Instructions shows the location of the racing area and the approximate location of each Government Buoy.

6 COURSES

6.1 Courses for each Class will be signaled by the Race Committee boat using black letters on a white board. Each letter represents a government mark as per SI 7.2 and Marks Chart

6.2 RED/GREEN BOARD - MARK ROUNDING DIRECTION

When the Course Boards are followed by a RED or GREEN board it indicates the direction the marks are to be rounded. RED indicates that all marks are to be left to PORT. GREEN indicates that all marks are to be left to STARBOARD. If no colored boards are displayed then by DEFAULT all marks are to be left to PORT.

6.3 TWICE AROUND - #2 BOARD

When the Course Boards are followed by a #2 board it indicates the course is to be sailed twice-around. When a twice-around course is signaled, yachts shall complete the first lap by sailing through the Start/Finish line. Racers are advised to be alert for a Shortened Course signal, should the Race Committee choose to make such a decision at this point in the race. If the "W" mark was used on the first lap, it will remain in effect on the second.

6.4 In a dying or light breeze, or in the event of an impending storm, the Race Committee may shorten the course as per RRS 32

6.5 Legs of the course will not be changed after the preparatory signal. This changes RRS 33.

7 MARKS

7.1 Marks are shown on Marks Chart

7.2 The following buoys are rounding marks:

- A . . . Can "1" 0.8 nm. North of Execution Rocks
- B . . . Bell "23" 0.8 nm. East of Execution Rocks
- C . . . Gong "1" 0.2 nm. East of Hart Island
- D . . . Fl. G "25" 0.4 nm. of Northwest of Sands Point
- E . . . Gong "27" Gangway Rock
- F . . . Fl. R "2" 1.5 nm. North of Execution Rocks
- G . . . Can "1" 0.5 nm. Northeast of Larchmont Breakwater
- H . . . Fl. G "29" 0.2 nm. North of Hewlett Point
- J . . . Fl. R "2" 0.1 nm. North of Huckleberry Island
- K . . . Fl. R "42" 0.95 nm. SSW of Peningo Neck flagpole, (American Y. C. / Milton Pt.)
- L . . . Can "1" Weeks Point
- W . . . an inflatable windward mark will be set one mile to windward of the starting line and shall be crossed on the same side as all other marks before proceeding to the first indicated government mark.

8 AREAS THAT ARE OBSTRUCTIONS

While not required, it is recommended that a yacht not pass between Execution Rocks Lighthouse and buoys N "44" and N "RG".

9 THE START

9.1 Races will be started as follows. Five minutes before the daily first warning of the first class only, flag F will be displayed with 1 sound. 1 minute before the first class's initial warning, flag F will be removed with 1 sound. This changes RRS 26.

9.2 Class starts may be signaled at five-minute intervals by displaying a class flag at the start of the preceding class, in which case the start of the preceding class shall be the warning for the next class.

9.3 At the discretion of the race committee, class starts may be combined. The race committee will signal this type of start by displaying the numeral pennants of all classes sharing the start as the warning signal.

9.4 The starting line for all classes will be between a staff displaying an orange flag on the race committee signal boat at the starboard end and the port-end starting mark.

9.5 The race committee signal boat may have one or more large inflatable buoys secured to it which shall be considered to be part of the committee boat for the purpose of RRS 31.

9.6 Boats whose warning signal has not been made shall keep clear of the starting area.

9.7 A boat that starts later than 10 minutes after her starting signal will be scored DNS probably.

10 RECALLS

The race committee will attempt to identify recalled boats and to broadcast their sail numbers on the race course VHF channel. Failure of a boat to see or hear her recall notification, and the timing and order of such hail, shall not be cause for redress.

11 CHANGE OF COURSE BETWEEN STARTS

If the race committee changes the first mark following a postponement during a starting sequence, flag C will be displayed with short repeated sounds prior to the warning signal.

12 THE FINISH

12.1 The finishing line for all courses will be between a staff displaying an orange flag on an official boat and the finish mark.

12.2 If a course is shortened, the finish line will be between a staff displaying flag S on an official boat and a rounding mark.

12.3 Finishing yachts are advised to IDENTIFY THEMSELVES as they approach the finish line. Hailing on Channel 71 is suggested. Making a note of yachts crossing the line ahead of you and after you may be useful to you and/or other competitors in the event of discrepancies.

12.4 The finish line shall be crossed in the direction from the last mark rounded.

13 PENALTY SYSTEM - PENALTIES TAKEN AFTER A RACE

After a race, a boat that may have broken a rule of Part 2 or Rule 31 while racing may take a Post-Race Penalty for the incident. The penalty shall be a Scoring Penalty as follows:

(a) 20%, if taken before the protest time limit, or

(b) 30%, if taken after the protest time limit but before the beginning of a hearing involving the incident.

A boat takes a Post-Race Penalty by informing the race Committee in writing and identifying the race number and when and where the incident occurred.

14 TIME LIMIT

14.1 If no boat in a class has finished within the time limit the race for that class will be abandoned.

14.2 The time limit for the first finisher in each class will be 2-1/2 hours from the starting time of that Class. Boats failing to finish within 3 hours will be scored "Time Limit Expired" (TLE) without a hearing. This changes RRS 35.

15 WITHDRAWAL

Any boat withdrawing before the start or retiring from a race for any reason shall notify the race committee at the earliest possible opportunity on the race course VHF channel 71 or by telephone.

16 PROTESTS AND REQUESTS FOR REDRESS

16.1 To initiate a protest, the protested yacht must be notified by hailing "Protest!" A RED protest flag must be flown from your backstay immediately after the infraction, and carried until the finish line is crossed.

16.2 Notify the Committee Boat after Finishing! (Round up on the side opposite the line after finishing and give the Race Committee the name and sail number of the protested yacht.) Protests must be filed before 1.5 hours after the last boat has finished.

16.3 At the first reasonable opportunity during, or immediately after, the race, a boat that accepted a Two-Turns Penalty shall report that fact to the race committee on the race course VHF channel 71 and identify the other boat(s) involved in the incident. This changes Rule 44.2.

16.4 Protests and Requests for Redress shall be filed on standard US SAILING protest forms. Protest forms will be available at the Huguenot Yacht Club.

16.5 The Protest Hearing will take place immediately after the race, at Huguenot Yacht Club. Failure to show on the part of either party within 1.5 hours after the last boat has finished will constitute a default (subject to RRS 63.3)

16.6 If you have been in a collision, you are REQUIRED to come to Huguenot Yacht Club immediately after the race for a protest hearing.

17 SCORING

Scoring will be calculated by the use of the Cox-Sprague System, with the points for each race determined by the number of starters in the Class and the finishing position of each yacht. (see Notice of Race for details.)

18 RADIO COMMUNICATION

18.1 The Race Committee shall communicate over VHF 71 and participants should monitored this channel prior to departure for updates from the Race Committee and continue until finished racing.

18.2 Except in an emergency, a boat shall neither make radio transmissions while racing nor receive radio communications not available to all boats. This restriction also applies to mobile telephones.





COURSES TO BE SIGNALLED BY CARDS ON THE COMMITTEE BOAT AS FOLLOWS:

DIV I - II	DIV III / IV	
H	D	First Mark
F	E	Second Mark
G	F	Third Mark (then to Finish Line)
2	2	Twice Around
Color	Color	Mark Rounding: Red - Marks to Port Green - Marks to Starboard

STARTING SYSTEM

RRS 26 shall be used as the Can One E.R.A. starting system. Starting signals shall be made with flags hoisted and horns sounded on the Committee Boat in accordance with that procedure. Members are advised to thoroughly acquaint themselves with Rule 26.

STARTING TIMES AND SIGNALS

Thursday	Division I	Division II	Division III	Division IV
1855	Attention Signal - Long Horn and Code Flag F			
1900	Div. I Flag			
1905	Start 	Div. II Flag		
1910		Start 	Div. III Flag	
1915			Start 	Div. IV Flag
1920				Start 

Note: If the races are postponed by the Race Committee the start times will be different.

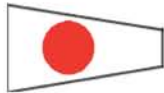
STARTING SEQUENCE

Races shall be started by using the following signals. Times shall be taken from the visual signals; the absence of a sound signal shall be disregarded.

	<u>Visual and Sound Signal</u>	<u>Minutes before starting Signal</u>
Attention Signal:*	Code Flag F hoisted with sound	10
	Code Flag F dropped with sound	6
Warning Signal:	Class Flag hoisted with sound	5
Preparatory Signal:	Code Flag P hoisted with sound (it accompanies the Class Flag)	4
One minute:	Code Flag P dropped with long sound	1
Starting Signal:	Class Flag dropped with sound†	0

* The "Attention Signal" shall only be sounded once, ten minutes before the start of the first Class.

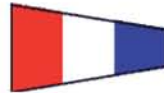
† The "Starting Signal" for each Class may serve as the "Warning Signal" for the following Class. (for example: at the start for Class I, the Class I flag is dropped and simultaneously the Class II flag is hoisted.)



Division I



Division II



Division III

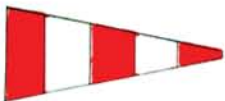


Division IV



Code Flag P:

Preparatory Signal: raised a 4 minutes before the start and removed at 1 minute before the start.



AP - Answering Pennant

Races not started are postponed. Postponements will be signaled by Code Flag "AP" and two sound signals. The "AP" flag will be dropped with sound 1 minute before Warning Signal (5 minute) signal for the Class scheduled to start next.

Magnetic Courses and Nautical Mile Distances Sailed Between Marks

TO FROM	A	B	C	D	E	F	G	H	J	K	L
A	A	136° 1.1 nm	224° 2.4 nm	196°* 1.4 nm	207°* 2.0 nm	002° 0.7 nm	033° 2.0 nm	210° 3.1 nm	282° 0.9 nm	050° 2.5 nm	115° 3.6 nm
B	316° 1.1 nm	B	248° 2.6 nm	244° 1.3 nm	238° 2.0 nm	334° 1.6 nm	008° 2.4 nm	230°* 3.0 nm	300° 1.9 nm	027° 2.6 nm	107° 2.6 nm
C	044° 2.4 nm	068° 2.6 nm	C	072° 1.3 nm	098° 0.7 nm	035° 3.0 nm	039° 4.4 nm	173° 1.0 nm	021°* 2.1 nm	047° 4.9 nm	088°* 5.0 nm
D	016°* 1.4 nm	064° 1.3 nm	252° 1.3 nm	D	227° 0.8 nm	012°* 2.1 nm	026° 3.3 nm	220° 1.8 nm	340°* 1.6 nm	038° 3.7 nm	093°* 3.7 nm
E	027°* 2.0 nm	058° 2.0 nm	278° 0.7 nm	047° 0.8 nm	E	021° 2.7 nm	030°* 4.0 nm	215° 1.1 nm	000°* 2.1 nm	040° 4.5 nm	086°* 4.4 nm
F	182° 0.7 nm	154° 1.6 nm	215° 3.0 nm	192°* 2.1 nm	201° 2.7 nm	F	048° 1.4 nm	205° 3.8 nm	241° 1.1 nm	065° 2.1 nm	125° 3.9 nm
G	213° 2.0 nm	188° 2.4 nm	219° 4.4 nm	206° 3.3 nm	210°* 4.0 nm	228° 1.4 nm	G	211°* 5.4 nm	234° 2.5 nm	093° 0.9 nm	146° 3.9 nm
H	030° ⁿ 3.1 nm	050°* 3.0 nm	353° 1.0 nm	040° 1.8 nm	035° 1.1 nm	025° 3.8 nm	031°* 5.4 nm	H	012°* 3.0 nm	039° 5.5 nm	076°* 5.5 nm
J	102° 0.9 nm	120° 1.9 nm	201°* 2.1 nm	160°* 1.6 nm	180°* 2.1 nm	061° 1.1 nm	054° 2.5 nm	192°* 3.0 nm	J	064° 3.2 nm	112° 4.5 nm
K	230° 2.5 nm	207° 2.6 nm	227° 4.9 nm	218° 3.7 nm	220° 4.5 nm	245° 2.1 nm	273° 0.9 nm	219° 5.5 nm	244° 3.2 nm	K	157° 3.4 nm
L	295° 3.6 nm	287° 2.6 nm	268°* 5.0 nm	273°* 3.7 nm	266°* 4.4 nm	305° 3.9 nm	326° 3.9 nm	256°* 5.5 nm	292° 4.5 nm	337° 3.4 nm	L

* Asterisk denotes rhumbline course crosses obstructions, submerged rocks or dry land.

**THIS TABLE IS FOR REFERENCE ONLY AND
IS NOT TO BE RELIED UPON FOR NAVIGATION!**

It is the responsibility of every competitor to be aware of the COLREGS and that they do not become a “privileged” vessel when participating in a race. This is especially true in meeting, crossing or overtaking situations with non-participant vessels and /or vessels constrained by their draft or ability to maneuver.

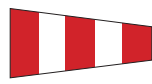
REMEMBER: A COLLISION AT SEA CAN RUIN YOUR WHOLE EVENING



COMMON RACE SIGNALS



The Class Flag (numeral or letter flag) is the Warning Signal: raised 5 min. before start and lowered at the start.



Postponement: Lowered one minute before new warning signal.



Rule 30.1 is in effect at the start (Around the Ends Rule). See 30.1 for details.



P flag is the Preparatory Signal: Raised 4 minutes before start & lowered 1 minute before start.



Change of Course: Position of next mark has been changed.



Any boat over the line within a minute of the start receives a 20% scoring penalty. See 30.2.

Class flag stays up from the warning signal to the starting signal. At the start, the Class Flag is dropped. The warning signal for succeeding classes shall be made with or after the starting signal. Read regatta's Sailing Instructions. See Rule 26 for more information.



Shortened Course: Finish between this boat and nearest mark.



Any boat over the starting line within a of minute the start is disqualified. See Rule 30.3.



X Flag: Indicates one or more boats started early. Flag is lowered once all boats have started correctly.



Ashore: Indicates that a notice to competitors has been posted. Afloat: Come within hail or follow me.



Flags N over A: All races for the day are abandoned. Go home.



General Recall. Flag lowered one minute before new prep.



All competitors are required to wear personal buoyancy.



Can One Race Committee

RACING BUOYS

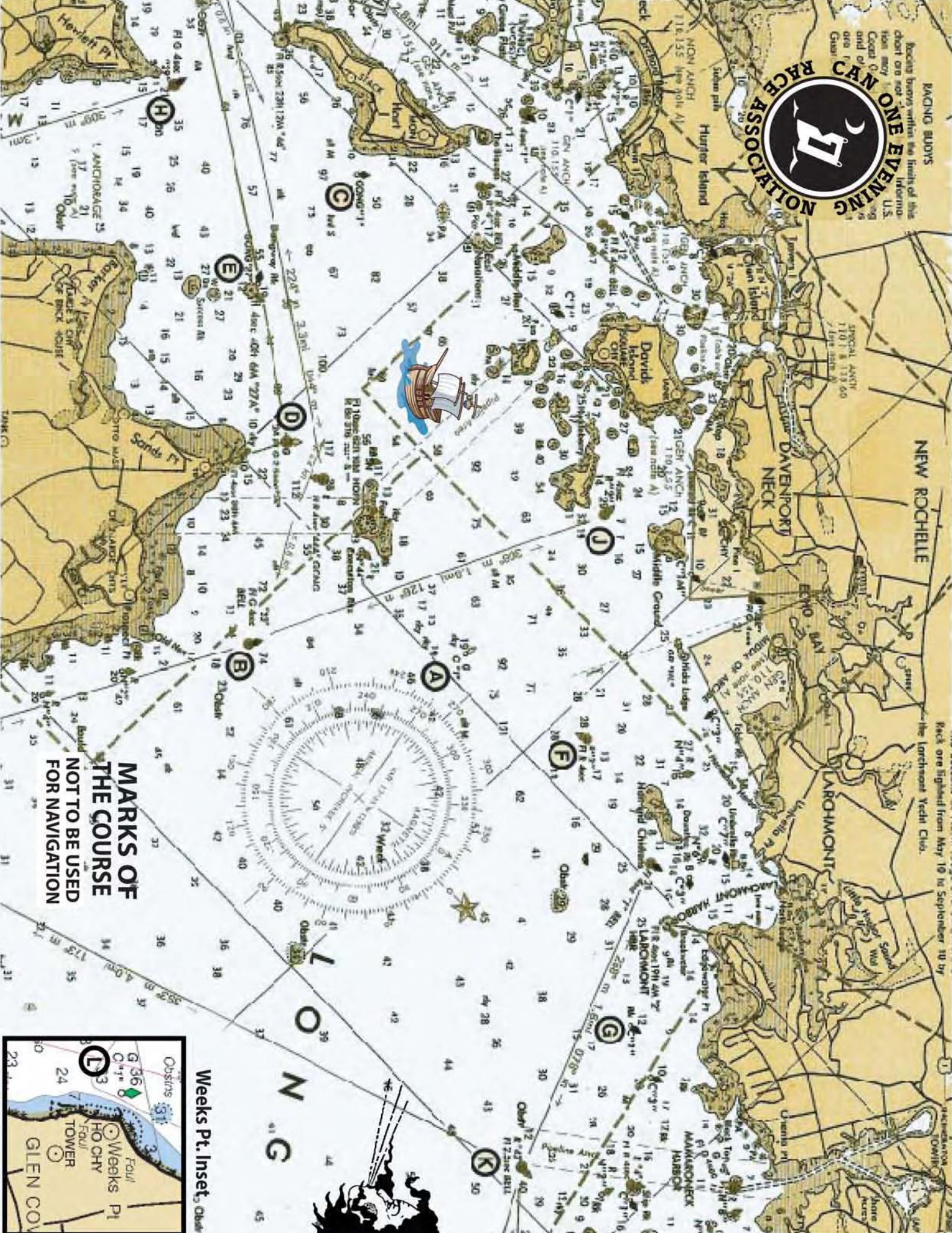
Facing buoys within the limits of this chart are not to be used as aids to navigation. U.S. Coast Guard and other U.S. Coast Guard



NEW ROCHELLE

the Larchmont Yacht Club.

Race one sighted from May 19 to September 10 by



MARKS OF THE COURSE NOT TO BE USED FOR NAVIGATION

L O N G

Weeks Pt. Inset, Chart

